

The logo features the word "ALUNA" in a bold, white, sans-serif font, positioned inside a white square frame. The word "BIFOLD" is written in a white, outlined, sans-serif font to the right of the square frame.

ALUNA BIFOLD

Super-slim aluminium bifolding doors from  **ALUNET**
SYSTEMS

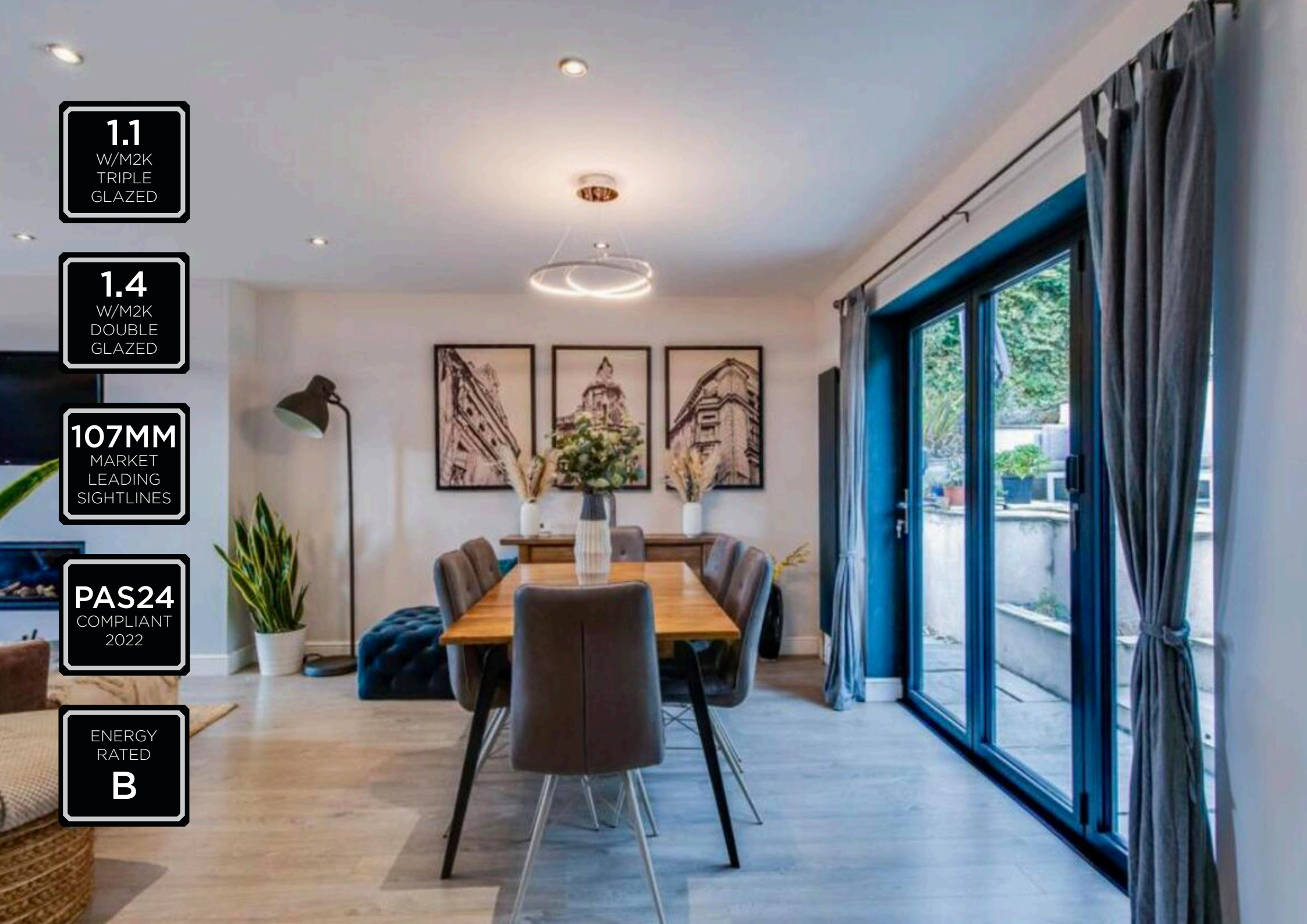
1.1
W/M2K
TRIPLE
GLAZED

1.4
W/M2K
DOUBLE
GLAZED

107MM
MARKET
LEADING
SIGHTLINES

PAS24
COMPLIANT
2022

ENERGY
RATED
B



ALUNA Bifold

The ALUNA bifold system offers a versatile, slimline system for single doors, French doors and bifolding doors and windows.

As an enhancement on the known and loved BF73 bifold system, the super-slim profile sections of the ALUNA bifold system minimise the visible framework and maximise the glass area, with market-leading sightlines of just 107mm.

Achieving a DER energy rating of B and a new PAS24:2022 certification, the bifolds are designed to the most up to date standards to be the best the market has to offer.

The ALUNA Bifold is part of a new collection of products brought to you by Alunet Systems, bringing their expertise and knowledge into a range unbeaten on quality.

- ❑ Super-slim sash
- ❑ Market-leading sightlines of just 107mm
- ❑ NEW sash extension
- ❑ NEW optional clip in bead
- ❑ NEW integrated Cill
- ❑ U-values as low as 1.1 triple glazed & 1.4 double glazed
- ❑ Energy rated B (DER)
- ❑ PAS24:2022 compliant



Sleek

Strong

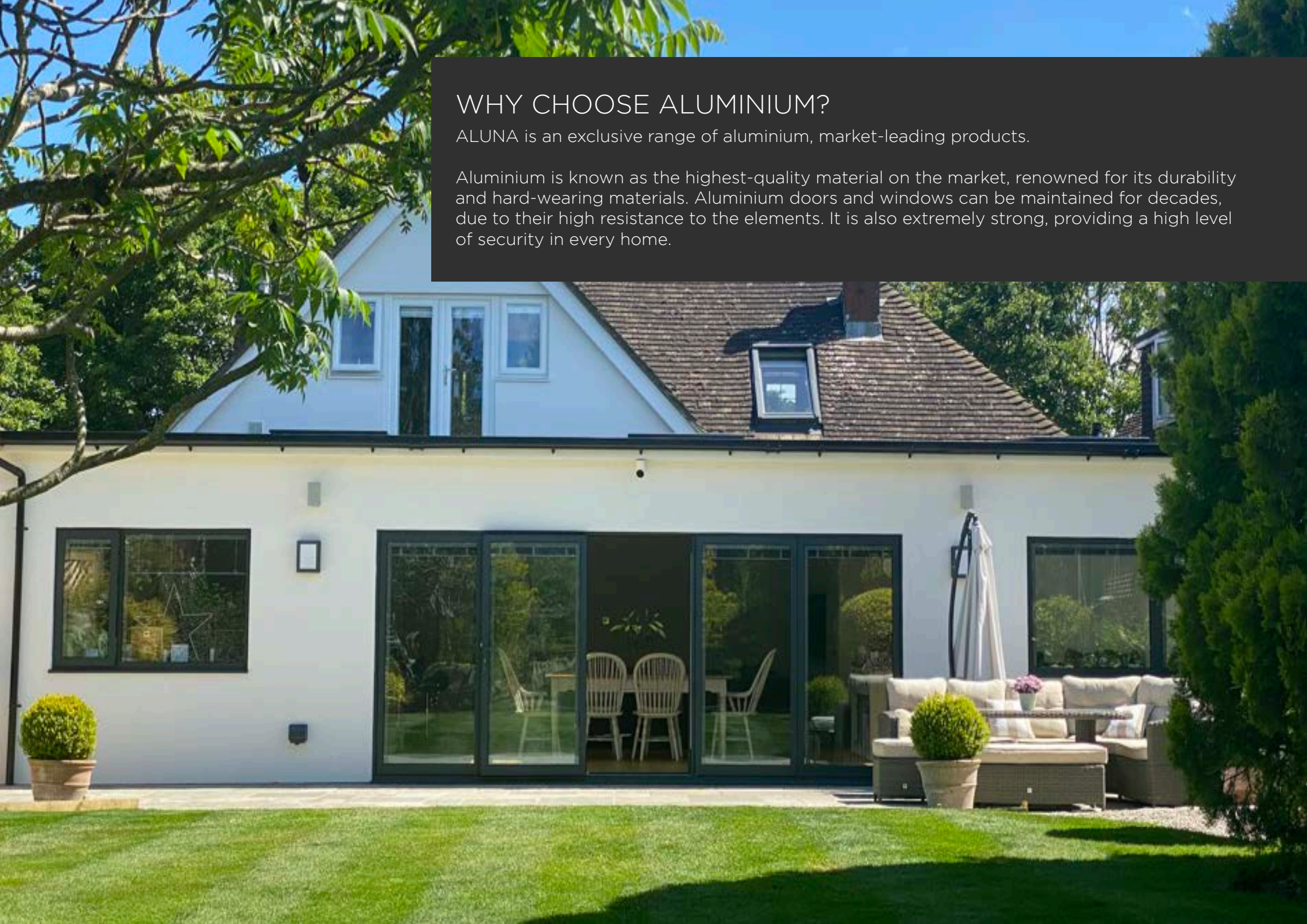
Secure

Aluminium bifolding doors designed to a high specification; thermally efficient, durable, safe and secure, all without compromising style.

WHY CHOOSE ALUMINIUM?

ALUNA is an exclusive range of aluminium, market-leading products.

Aluminium is known as the highest-quality material on the market, renowned for its durability and hard-wearing materials. Aluminium doors and windows can be maintained for decades, due to their high resistance to the elements. It is also extremely strong, providing a high level of security in every home.





ENERGY
RATED

B

PAS24
COMPLIANT
2022

107MM
MARKET
LEADING
SIGHTLINES

1.4
W/M2K
DOUBLE
GLAZED

1.1
W/M2K
TRIPLE
GLAZED

New & Improved System

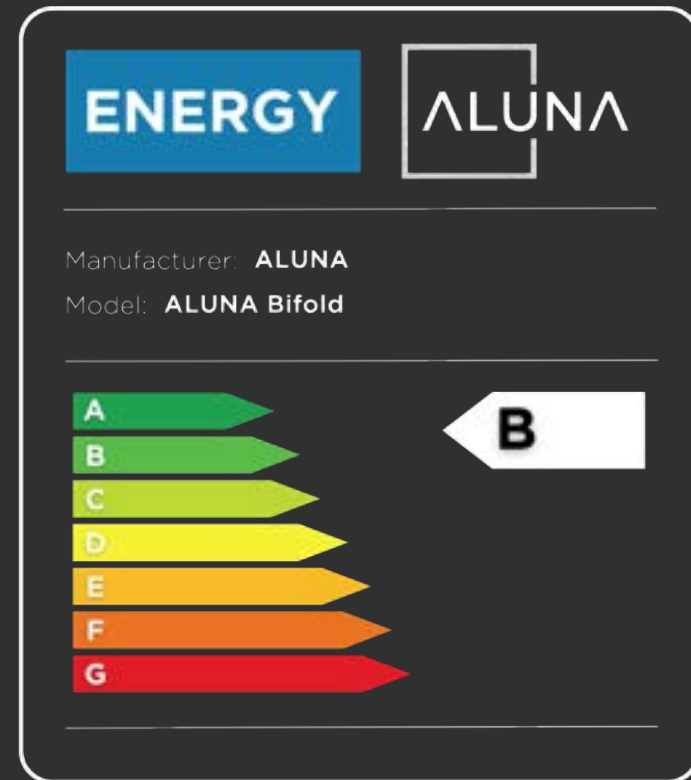
The NEW ALUNA Bifold system showcases new and improved features of the known and loved BF73 system.

NEW slimmer profile sections boast sightlines of just 107mm with market-leading sash sizes up to 1200mm wide and 3000mm high per pane. The ALUNA Bifold can also be manufactured with up to 7 leaves each way (14 in total).

Enjoy silky smooth operation due to engineering-grade hardware plus improved thermal performance with U-values as low as 1.1 U/m²K. Also benefitting from high security, compliant to PAS24:2022 standards, the ALUNA Bifold system is ideal for opening spaces up to the outdoors and creating a visually stunning addition to any property.

The new sash extension is another improved feature to the ALUNA Bifold, offering ease of fabrication and requiring fewer gaskets, enhancing ease of operation and experience.

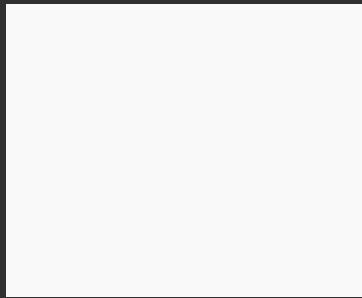
Plus, try our NEW clip-in bead for quicker installations!



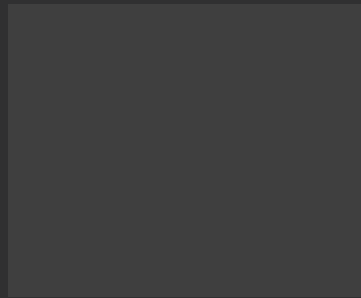
Colours

Our ALUNA Bifold products are available in any RAL colour upon request.

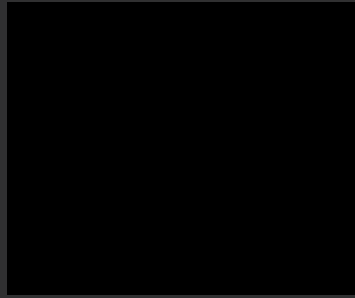
The standard colours that we have in stock are Grey 7016 (Matte), Black (Matte), White 9016 (Gloss), Grey 7016 (Matte) on White 9016 (Gloss) and Black 9005 (Matte) on White 9016 (Gloss).



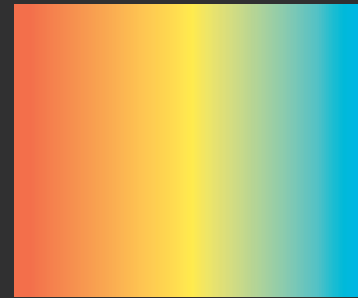
White
RAL9016



Anthracite Grey
RAL7016



Black
RAL9005



Bespoke RAL
Colour



Grey Out/
White In



Black Out/
White In

ALULOCK

LOCK, KEEP AND HANDLE

The ultimate security kit for ALUNA Bifolds.

ALULOCK security kit combines a euro profile cylinder as standard, with the option to upgrade to the Ultion 3-star barrel, with the Brisant Sweet Handle and an exclusively designed Duplex Double-Hook Lock, providing a solid 6-point locking system for additional security.

THE SWEET HANDLES

Safe, Stylish & Durable

The Ultion Sweet Handles are a popular upgrade due to their impressive durability as part of the ultimate security kit. These stunning handles are highly secure, and can stop gripping tools designed to snap off handles during break ins.

Carrying multiple coatings of brass and nickel to ensure robust performance, with a 10-year anti-corrosion guarantee for peace of mind.



Available in a range of colours including: black, white, grey, chrome, stainless steel, gold and rose gold.

STAINLESS STEEL HANDLE

316 Marine Grade Stainless Steel

The stainless steel handle upgrade has been designed by experts for enhanced performance and durability creating one of the highest quality door handles on the market.



The suited handle is made from 316 marine grade stainless steel, compared to the industry-standard of 304, giving it long-term resistance to corrosion.

Thresholds

The ALUNA Bifold, French Door & Single Door can all be designed with the following threshold options:



Standard threshold

A 55mm threshold that acts as a full weather break.



Low threshold

A 20mm threshold for a seamless look.



Low threshold with rebate

A 20mm rebate attached to a low threshold.



Low threshold with ramps

Ideal for homes that need additional accessibility.



NEW Integrated cill

Provides full weather rating and maximises the overall sash height.

Universal aluminium cills

Compatible with most systems, directing water way from brickwork (available as 90mm, 150mm, 190mm & 230mm).

One system that does it all

Whether it's a single door, French door or bifolding door or window, they can all be fabricated from the same ALUNA Bifold system.

It's so versatile that it can cater for projects that call for shaped frames, fixed frames, sidelights, astragal bars, blinds in glass, and can even be used as an entrance door with optional panel inserts.

All ALUNA Bifold products can be finished in several glazing options to suit any property, including:

- Double & triple glazing
- Integral blinds
- Heritage look astragal bars & transoms
- Solid panel inserts

All sashes with the bifolding system are available in 2 profile designs: square and textured square*. Choose square for a classic look or textured square for a more contemporary alternative.

**Textured square only available in 7016 anthracite grey*

Also new to the bifold system is our door restrictor, preventing the door from opening over 90 degrees. Easy to install, the arm can also be detached for full opening of the door.

Easy Installation

The ALUNA bifold system has been designed to be quick and easy to install. The system offers an optional adjustable jamb feature for maximum adjustability of +/- 4mm either side during installation and is easily managed with an allen key.

Floating Corner Post

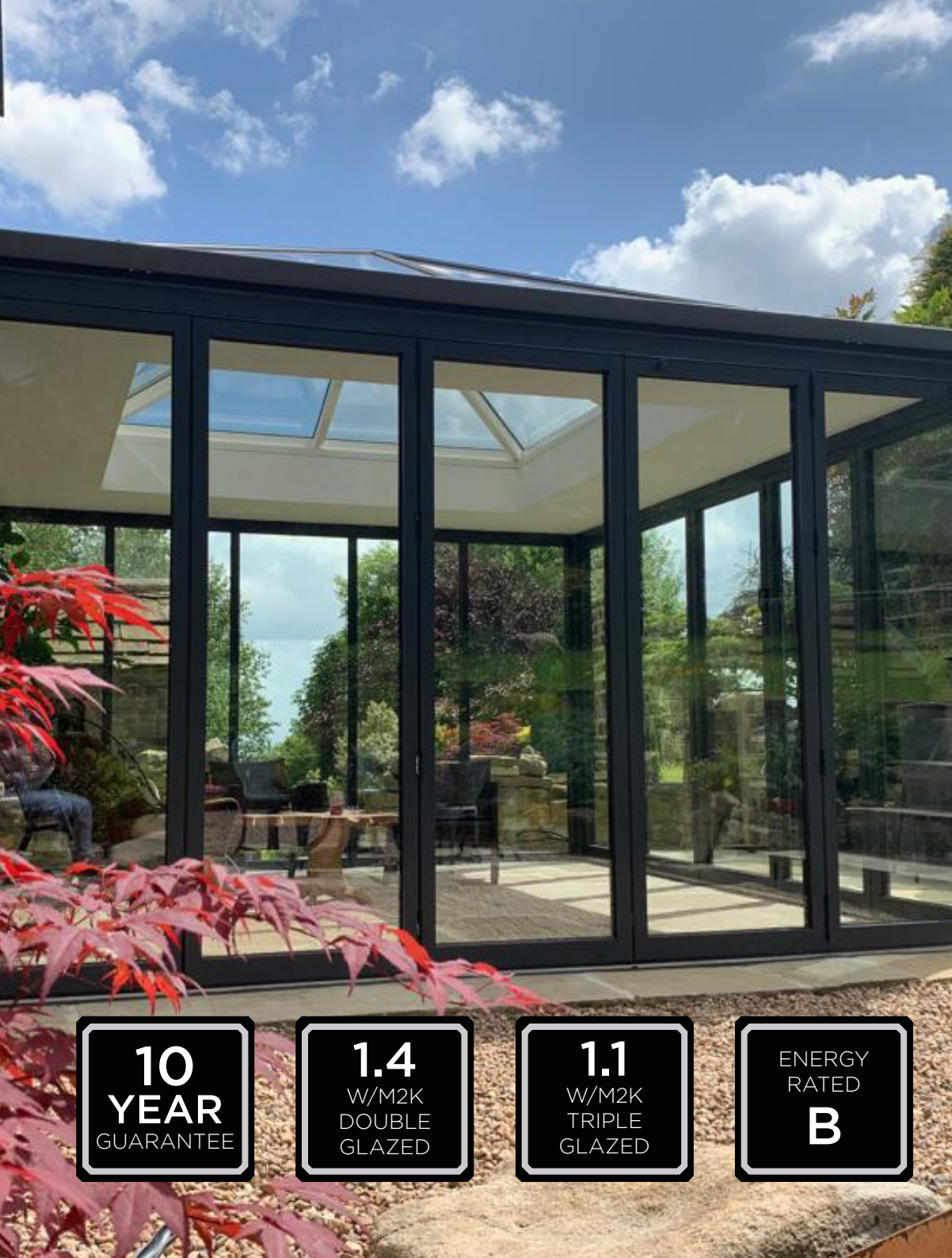
The floating corner post option enables right-angled BF73 bifolding doors, including the return, to open out fully, with the option of a fixed corner for the ultimate wow factor! (Structural support needs to be in place.)

Weather Resistance

Excellent weather sealing is achieved using specially designed perimeter seals, with the option of weather piles for lower thresholds. The weather-tightness has been tested to British standards.

Low Maintenance

Our low-maintenance aluminium doors are strong, durable and corrosion-resistant. Unlike timber, they don't need painting or staining to keep them weatherproof, and they won't rust or corrode. They will also never rot, peel or flake.



TECHNICAL DETAILS AT A GLANCE

- ❑ Market-leading maximum sash sizes up to 1200mm x 3000mm
- ❑ Maximum vision – minimal sight lines of only 107mm or 120mm
- ❑ Maximum security- PAS24:2022 certification
- ❑ U-values as low as 1.1 with triple glazing and 1.4 with double glazing (U W/m2k)
- ❑ Maximum weatherproofing – tested to BS6375 Part 1:2009
- ❑ Single or dual colour. Factory powder coated to marine quality as per Qualicoat regulation
- ❑ 120kg per door leaf provided for the openings
- ❑ Engineering-grade running rollers for a smooth and silky opening and closing operation
- ❑ Trickle vents can be added

10
YEAR
GUARANTEE

1.4
W/M2K
DOUBLE
GLAZED

1.1
W/M2K
TRIPLE
GLAZED

ENERGY
RATED
B

ALUNA BIFOLD

Brought to you by



T: 01924 350 110

info@alunetsystems.co.uk

www.alunetsystems.co.uk



Alunet Systems
Low Mill Lane, Havelock Street
Ravensthorpe Industrial Estate
Ravensthorpe
Dewsbury
WF13 3LN